

ST ALBAN'S COLLEGE STAFF PD 2018

Weekly PD Sessions



ENVISIONING THE TEAM

Termly discussions about the school's vision. These are usually led and presented by the Headmaster. These regular sessions have been key in communicating common focus and direction. This started on our annual staff retreat in January 2018

LEARNING SUPPORT

With this becoming a key focus area in our school, Elnette and her team facilitated whole staff sessions on supporting boys with learning needs.



FOSTERING BELONGING

One of the most important areas of growth for our team has been in terms of fostering being and belonging in our spaces. With guidance from the Centre for Being and Belonging, a number of conversations and workshops around race, transformation and diversity have been held. These have been a combination of CBB and internally led sessions

READING GROUPS

Each staff member has been an active contributor to a reading group: Rising Strong - Brené Brown; Creating Cultures of Thinking - Ron Ritchhart; Creative Schools: The Grassroots Revolution That's Transforming Education - Ken Robinson; The Minds of Boys - Michael Gurian; Mathematical Mindsets - Jo Boaler; A Journey of Diversity & Inclusion In South Africa - Nene Molefe; Most Likely to Succeed: Preparing Our Kids for the Innovation Era - Wagner and Dintersmith; Visible Learning and the Science of How We Learn - John Hattie

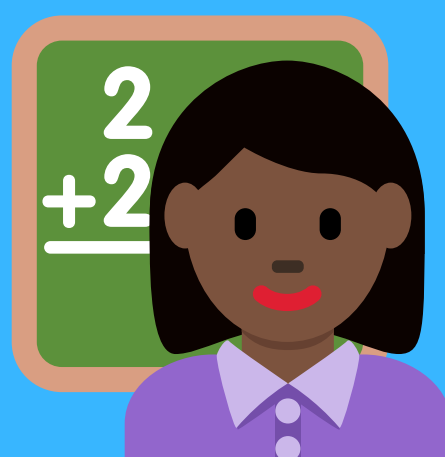


INNOVATION PLANNING

Staff think tanks and planning sessions focused on curriculum innovation and breaking down subject silos. New junior modules for 2019 developed as a result of these sessions (See innovation and creativity infographic for details).

PEDAGOGY

Sessions focused on the science of learning. Colleagues presented on a host of topics, ranging from Philosophy for Children and Empathy Development to research into assessment.



OUR INVESTMENT IN PEOPLE

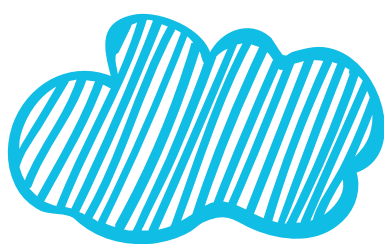
Growth Opportunities



**ACTION
RESEARCH**



**LEARNING
EXPERIENCES**



**TECH
INTEGRATION**



**TRAINING &
FORMAL
STUDIES**



**STAFF
WELLNESS**
